



Sailing Whanganui

Delivering Sailing Opportunities for All

Handbook

70 Gilberd Street
Whanganui

www.sailingwhanganui.co.nz

Index

Mission Statement	3
Club Officers	4
Programme Clarifications	5
Club Management Structure	6
Sailing Instructions	7
Event Modification Notice	10
Championship & Handicap	11
Safety	13



Mission Statement

Sailing Wanganui will develop and secure partnerships and implement financial and reporting structures that ensure long term financial security of the organisation. Reserves will be established and utilised to ensure the ongoing supply of plant to meet the Club's development needs.

Sailing Wanganui will be recognised as the organisation in the region for the provision of sailing opportunities that allows any individual to reach their potential.

Sailing Wanganui, through its staff, volunteers and members, will work with pride, professionalism, enthusiasm and innovation to become the recognised leader of sailing in Wanganui. Staff development will recognise and build skills to ensure that they are leaders in their respective fields of work.

Sailing Wanganui will build participation through the provision of quality sailing opportunities and events and by connecting with new customer groups. Sailing Wanganui will develop a culture of "fun for everyone". The Club will be recognised as the leading provider of innovative and quality events, facilities and promotions for the development of sailing in the region. Acting as a centre of excellence for the development of sailing in Wanganui it will also be recognised as the leading advocate of the development of sailing in the region.



Club Officers

Patron	Ken Bradshaw	Ph: 345 3472
Commodore	Stew Thomas	Ph: 027 289 5611
Vice Commodore	Josh McDonnell	Ph: 027 925 3379
Club Captain	Lindsay Stephenson	Ph: 027 498 6309
Secretary:	Phil Tetzlaff	secretary@sailingwhanganui.co.nz
Treasurer:	Bob Davies	Ph: 021 803744 treasurer@sailingwhanganui.co.nz

General Committee:	Andrew Montgomery	Ph: 027 288 5545
	Shawn Thomas	Ph: 027 2488 037

Sailing Committee: Sailing Committee is the same as main committee

Results Co-Ordinator:	Shawn Thomas	Ph: 027 248 8037
-----------------------	--------------	------------------

Strategic Committee:	Stewart Thomas
----------------------	----------------

Coaching Coordinator:	Bob Davies	Ph: 021 803 744
-----------------------	------------	-----------------

Club Auditor	Ken Roddick
--------------	-------------

Club Solicitor	J T Refoy-Butler
----------------	------------------

Programme Clarifications

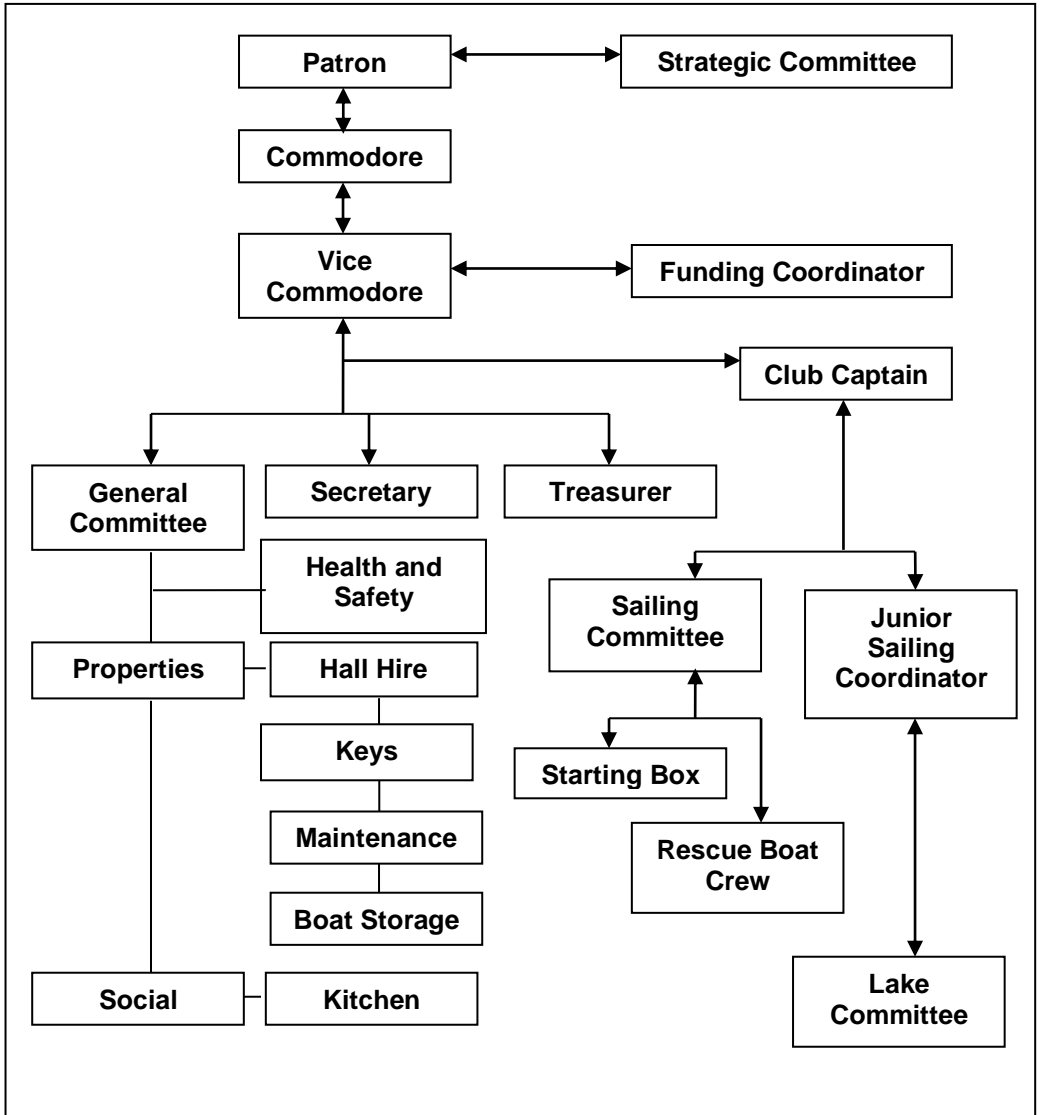
Regattas are open to all Current Members or financial members of a Yacht/Sailing club on payment of the prescribed entry fee.

Club races are open to all financial members of a Yacht/Sailing Club

New members on payment of the required Subscription.

1. The Sunday Series will be both Championship and Handicap Series.
2. Saturday racing will be set by sailing committee
3. The Studholm Cup will be mixed Championship Ratings and Club Handicaps
4. For overall Championship/Handicap results, will depend on total number of races sailed refer to sailing instructions 16.2
5. In the event of a tie for any place the procedure described in Appendix A paragraph A8 of the Yacht Race rules will be used.
6. In determining overall results, a Championship place will preclude a handicap place.
7. Races may be held at sea, at the discretion of the sailing committee, providing a minimum fleet of five boats are entered and available to start for that individual race, and that safety requirements for all boats have been met. Any boat not meeting the safety requirements will be ineligible to compete.
8. The Competitor's individual average points will be allocated to any person not starting in a Club race due to attendance at a nationally recognised event.
9. A Competitor may apply to the sailing committee for average points for other events which is at the discretion of the sailing committee
10. Competitors requested by the Sailing Committee to act as Race Officials shall be allocated their average points for the series, for that race.

Club Management Structure



Sailing Instructions

The Organizing Authority is WHANGANUI SAILING CLUB Inc.

1.0 Rules

- 1.1 All races will be governed by the 'rules' as defined in the current YNZ Racing Rules of Sailing.
- 1.2 The YNZ Safety Regulations are deemed to be part of the Sailing Instructions
- 1.3 In an event, race or series of races that Class Ratings or Handicaps are applied to determine final results the onus is on participants to ensure that the boat they have entered complies with Class rules for that type of boat.

2.0 Notices to Competitors

- 2.1 Notices to competitors will be posted on the official notice board in the clubhouse.

3.0 Changes to Sailing Instructions

- 3.1 Any change to the Sailing Instructions will be posted at least 55 minutes prior to the warning signal of the race it will take effect, except that any change to the schedule of races will be posted on the scheduled Club Day before it will take effect.
- 3.2 Studholm Cup. This Cup is raced for by the whole fleet over two weekends, one around the start of season and the other at the end of season. **All Races to Count.** Races sailed on Saturday(s), two races are on handicap and one race is championship and Sundays one club handicap race and two championship the results aggregated.
- 3.4 Champion of the river is sailed for by the same weekend as Studholme Cup but is only Championship races. **All Races Count.**

4.0 Life Jackets

- 4.1 All crew members shall wear lifejackets or other personal buoyancy. Wetsuits & dry suits are not adequate personal buoyancy. This changes rule 40. It is advised by sailing Whanganui to wear your lifejacket over top of your spray jacket for ease of rescue and to wear a helmet for head protection

5.0 Schedule of Races

- 5.1 Racing is scheduled as per the published race programme.

6.0 Class Flags

- 6.1 Will be the number pennant corresponding to the order of start for each day.

7.0 Signing on and off when finished

7.1 All skippers must sign on prior to the start of the first race each day. The sign on sheets will be placed in the clubhouse near the course board. If not signed on will result in a **DNC**, (Did Not Compete).

7.2 All Skippers must sign off when finished racing. Skippers not intending to start the second race of the day, or skippers who retire from a race shall notify the race committee on the **start/finish boat**.

8.0 Racing Area

8.1 All courses will be sailed on lower reaches of the Whanganui River or as otherwise advertised in the published race programme.

9.0 The Courses

9.1 The courses will be illustrated at least 30 minutes before each race on the course board. Races to be sailed 'Back-to-Back' will be indicated on the course board.

10.0 Marks

10.1 All course marks will be orange buoys.

11.0 Allowance of Average Points

If serving as a crew member on Rescue boat or Committee and your fleet is racing you are entitled to average points,
If you wish to attend an event and request average points rule 8 and 9 in Programme clarifications apply.

12.0 Committee Boat Starting procedure

12.1 Boat Starts will be in accordance with current YNZ rules xxx

Shortened Course

13.0 The flying of a class flag(s) with code flag 'S' means instruction 12.1 only applies to that/ those class(es)

13.3 Shortened Course for Boat Starting/Finish

This will be in accordance with current YNZ rules xxx

15.0 Committee Boat Finishing procedure

- 15.1 The finishing line will be Committee Boat and the finishing mark.
- 15.2 All boats must finish between the Committee Boat and the outer finish mark.
- 15.3 Yachts must not re-cross the finishing line in the direction of the course after finishing and clearing the finish line.

16.0 Time Limits

- 16.1 Boats still racing but failing to finish within 15 minutes of the first boat in her class may be given a finishing position based on their place at the last mark they rounded, their score will be greater than any boat who rounded further marks or who finished. OR the boat may be scored “**Did Not Finish**” This changes rules 35 and A4.
- 16.2 A boat starting more than **Four Minutes** after the starting signal will be scored “**DID NOT START**” without a hearing. This changes rule A4.

17.0 Protests and Requests for Redress

- 17.1 Protest forms are available from the race office. Protests shall be delivered there within the protest time limit.
- 17.2 For each class, the protest time limit is 30 minutes. The protest time shall start at the end of the days racing and shall be signalled by the flying of code flag B from the clubhouse. The same protest time applies to all protest by the race committee and to requests for redress. This changes rules 61.3 and 62.2
- 17.3 Notices will be posted within 30 minutes of the protest time limit to inform competitors of the date and time of hearings in which they are parties or named as witnesses
- 17.4 The Protest committee may award a time penalty at any protest hearing in place of disqualification.

18.0 Scoring

- 18.1 The Low Point scoring system of Appendix A shall apply.
- 18.2 For Sunday & Saturday Series Racing 80% of the total races sailed shall count.

19.0 Disclaimer of Liability

- 19.1 Competitors participate in any event entirely at their own risk. See rule 4,

Decision to Race. The organising authority will not accept any liability for material damage or personal injury, or death sustained in conjunction with or prior to, during, or after any event.



Event Modification Notices

The following additions and variations to Event and Race Management will be applied when a race or event of any type is conducted, either at the club or at any other venue, which would normally call for an alteration to the published Sailing Instructions. They shall only be applied if the Yachting New Zealand Racing Rules of Sailing and Sailing Whanganui Sailing Instructions are either silent or state procedures that are inappropriate for the event and or location, and in this case are deemed to be part of the Sailing Instructions.

Paragraphs 3, 6, 7, 8 and 9 from the local Sailing Instructions may be deleted.

Marks (This replaces paragraph 10 of the local Sailing Instructions)

Marks may be of any colour and type and may be replaced by a structure or landmark when appropriate. The type of mark shall be advised to all participants a reasonable period before the first race of any event. This notification by the Principle Race Officer may be verbal, and the onus is on all participants to ensure understanding of the course layout to be used.

The Start

The start boat shall be the assigned rescue craft on the day and will run a start sequence in accordance with yachting NZ Rules, using the flag system.

Mixed Class Racing

In the event of a protest or blatant disregard of the Sailing Instruction 1.3 requirement the Race Committee, without needing recourse to the protest committee, may make any adjustment to the rating or handicap deemed necessary. In the event of a dispute the onus is on the offending boat owner or representative to prove compliance with Class Measurement Rules.

Championship & Handicap

Championship Rating System (September 2014)

The following are the class ratings applicable to boats being sailed in races controlled by Sailing Wanganui.

470	.960	Optimist	.570
Noelex 22	.806	P Class	.650
Byte	.850	Paper Tiger	1.110
Davidson 20	.686	Splash	.800
Europe	.850	Starling	.750
Farr 5000	.690	Sunburst	.750
Farr 6000	.750	Sunburst (no Spin)	.730
Hartley 16	.720	Topper	.740
Int Moth Wings	.860	RS Feva	.790
Laser	.870	Heron	.690
Laser Radial	.860	NZ Moth	.870
Laser 4.7	.790	Kestral 18	.700
Micron 3	.780	Tasman 20	.747

To calculate corrected time, use the following formula:

'Elapsed Time' x 'Rating' = 'Corrected Time'.

Handicap Rating System

Each Skipper and boat combination are allocated a rating for the purposes of calculating handicap systems. This rating is a maximum of 1 (equal to 0% using percentages) down to whatever is necessary. All calculations are made (using the above formula) on the boats elapsed time with no adjustments made for the type of boat.

Using the elapsed time for this calculation evens out any local performance variations for boats being sailed better or worse than the national average. Handicap ratings are set and modified over as many race results as possible to even out unusually good, or bad, one-off results.

Safety At Sea

Trailer Yacht Safety Requirements for Racing at Sea.

Each yacht shall have: -

- approved buoyancy aids, in good condition, for all crew to be worn at all times.
- one 600 x 600 or larger orange flag for waving (distress flag)
- a reliable compass.
- one manual bilge pump or one bucket of stout construction with a 9-litre minimum capacity, with a lanyard attached.
- a fire extinguisher with a minimum of 0.9 kg dry powder or equivalent.
- a first aid kit, well stocked.
- an anchor and sufficient chain and warp securely attached.
- an outboard motor with sufficient fuel.
- a transceiver type radio (preferably a marine type VHF)

**Special note: These requirements are the absolute minimum.
Any yacht found not to be meeting these conditions will be disqualified.**

Rescue Boat Requirements.

The rescue boat shall have: -

- a minimum of 2 crew, all of whom shall be wearing approved buoyancy aids.
- sufficient fuel
- the responsibility of conducting the racing at sea and may at any time, change, shorten, abandon the racing if in their opinion the conditions warrant such a measure.

Winter Series Race Management.

A committee of three experienced skippers including the rescue boat driver to decide on race condition suitability taking into account: -

- An up-to-date weather forecast.
- The bar condition, no yacht shall attempt to cross the bar until notification from the rescue boat deems the conditions suitable.

