



Sailing Wanganui

Delivering Sailing Opportunities for All

PO Box 594
70 Gilbert Street
Wanganui

www.sailingwanganui.co.nz

2016 - 2017

Index

| | |
|-------------------------------------|----|
| Club Officers | 4 |
| Programme 2016-2017 | 5 |
| 2015-2016 Season Results | 8 |
| Programme Clarifications | 11 |
| Club Management Structure | 12 |
| Mission Statement | 13 |
| Sailing Instructions | 14 |
| Event Modification Notice | 18 |
| Championship & Handicap | 19 |
| Safety | 20 |
| Club Constitution | 21 |
| Boat Register | 25 |
| Use of Club Boats | 26 |
| Agreement to Use Club Boats | 27 |
| Season Subscriptions & Storage Fees | 28 |
| Club Membership | 29 |

Frequently called numbers

| |
|--|
| |
| |
| |
| |
| |
| |
| |
| |
| |
| |
| |

Sailing Club Hall Hireage

*\$250 night time
(half price for members)
Bond required.
Daytime rates negotiable*

To protect the Club property Non Member
Hall Hire is screened to meet acceptable use
criteria

Club Officers

| | | |
|----------------|----------------|------------------|
| Patron | John Channon | Ph: 343 2332 |
| Commodore | Shawn Thomas | Ph: 027 248 8037 |
| Vice Commodore | Lisa McDonnell | Ph: 027 347 8698 |
| Club Captain | Stewart Thomas | Ph: 0272 895 611 |
| Secretary: | Leanne Wills | Ph: 021 252 6455 |
| Treasurer: | Bob Davies | Ph: 021 803 744 |

| | | |
|--------------------|--------------------|------------------|
| General Committee: | Andrew Montgomery | Ph: 027 288 5545 |
| | Phil Patterson | Ph: 345 9234 |
| | Keith Ryland | Ph: 027 448 1989 |
| | Paul Squire | Ph: 021 778 473 |
| | Lindsay Stephenson | Ph: 027 498 6309 |
| | Josh McDonnell | Ph: 027 925 3379 |
| | Dean Wills | Ph: 021 215 6889 |

| | | |
|--------------------|----------------|------------------|
| Sailing Committee: | Stewart Thomas | (Club Captain) |
| | Ken Bradshaw | Ph: 345 3472 |
| | Peter Reay | Ph: 021 2179 159 |
| | Lisa McDonnell | Ph; 027 347 8698 |
| | Ian Perry | Ph: 021 0386 931 |

| | |
|----------------------|----------------|
| Strategic Committee: | Stewart Thomas |
| | John Channon |

| | | |
|-----------------------|------------|--------------------------|
| Coaching Coordinator: | Bob Davies | Ph: 345 7155/021 803 744 |
|-----------------------|------------|--------------------------|

Rescue Boat Crew

Starting Box Officials

| | |
|--------------|-------------|
| Club Auditor | Ken Roddick |
|--------------|-------------|

| | |
|----------------|------------------|
| Club Solicitor | J T Refoy-Butler |
|----------------|------------------|

Programme 2016-2017

| SAILING PROGRAMME 2016/2017 Approved | | | | | | |
|--------------------------------------|-------|--------|------------|-------|-------------------------------------|-----------------------------------|
| DATE | TIDE | HEIGHT | LOC | START | EVENT | DETAILS |
| SEPTEMBER | | | | | | |
| SAT 03 | 11:15 | 2.8 | | 9:45 | ? | |
| SUN 04 | 11:47 | 2.8 | | 10:15 | ? | |
| FRI 09 | | | | 18:00 | | Dinner at the greyhounds 18:00 |
| SAT 10 | 15:43 | 2.2 | | 14:15 | ? | |
| SUN 11 | 17:17 | 2.1 | | 16:00 | ? | |
| Wed 14 | | | | 19:00 | | |
| SAT 17 | 10:27 | 2.9 | | 9:00 | Shakedown Race 1+2 | |
| SUN 18 | 11:05 | 3 | | 9:30 | Shakedown Race 3+4 | |
| SAT 24 | 15:51 | 2.4 | | 14:30 | Mini Regatta No 1 | |
| SUN 25 | 18:23 | 2.3 | | 17:00 | Mini Regatta No 1 | Daylight Saving /Drinks on Deck |
| OCTOBER | | | | | | |
| SAT 01 | 11:17 | 2.8 | | 10:00 | Saturday Series 1+2+3 | |
| SUN 02 | 11:49 | 2.8 | | 10:30 | SUNDAY SERIES 1+2+3 | Opening Day |
| SAT 08 | 15:11 | 2.4 | | 13:30 | Mini Regatta No 2 | |
| SUN 09 | 16:11 | 2.3 | | 14:30 | Mini Regatta No 2 | Drinks on Deck |
| SAT 15 | 10:25 | 2.8 | | 9:00 | Saturday Series 4+5+6 | PTs Rotorua Regatta |
| SUN 16 | 11:05 | 3 | | 9:30 | SUNDAY SERIES 4+5+6 | PTs Rotorua Regatta |
| SAT 22 | 15:21 | 2.5 | | 14:00 | Taupo Weekend Cruise | |
| SUN 23 | 16:28 | 2.4 | | 15:00 | Ph Dave 06 3574042 | |
| MON 24 | 17:53 | 2.3 | | 16:30 | | Labour Day |
| SAT 29 | 10:16 | 2.6 | | 8:45 | Saturday Series 7+8 | |
| SUN 30 | 10:50 | 2.7 | | 9:30 | SUNDAY SERIES 7+8+9 | |
| NOVEMBER | | | | | | |
| SAT 05 | 14:06 | 2.6 | | 12:30 | Saturday Series 9+10+11 | PTs Ngaroto Regatta |
| SUN 06 | 14:52 | 2.5 | | 13:30 | SUNDAY SERIES 10+11 | PTs Ngaroto Regatta |
| SAT 12 | 9:14 | 2.6 | No/Sailing | 7:45 | ? | Quiz night at stellar, teams of 6 |
| SUN 13 | 10:01 | 2.8 | Putiki | 8:30 | Laser & Bic challenge | |
| SAT 19 | 14:13 | 2.8 | | 12:30 | Studholm Cup/Junior Class Challenge | All Boats 2x handicap 1x Champ |
| SUN 20 | 15:03 | 2.6 | | 13:30 | Studholm Cup/Junior Class Challenge | All Boats 2x Champ 1x Handicap |
| SAT 26 | 9:02 | 2.4 | No/Sailing | 7:30 | ? | PTs Napier Regatta |
| SUN 27 | 9:46 | 2.5 | Putiki | 8:15 | Laser & Bic challenge | PTs Napier Regatta |
| DECEMBER | | | | | | |
| SAT 03 | 13:11 | 2.8 | | 11:30 | Saturday Series 12+13+14 | PETER BLAKE REGATTA-TORBAY |
| SUN 04 | 13:50 | 2.7 | | 12:30 | SUNDAY SERIES 12+13+14 | PETER BLAKE REGATTA-TORBAY |
| SAT 10 | 7:42 | 2.4 | | 8:00 | Bic Training Regatta | Russell Coutts doing Training |
| SUN 11 | 8:45 | 2.6 | | 8:00 | Bic Training Regatta | Russell Coutts doing Training |
| SAT 17 | 13:14 | 2.9 | | 11:45 | Saturday Series 15+16+17 | |

| | | | | | | |
|-----------------|-------|-----|------------|-------|--|---|
| SUN 18 | 13:57 | 2.8 | | 12:30 | SUNDAY SERIES 15+16+17 | Pre-christmas pot luck BBQ & happy Hour |
| SAT 24 | 7:14 | 2.2 | | 5:45 | | |
| SUN 25 | 8:21 | 2.2 | | 7:00 | Christmas Day | |
| MON 26 | 9:14 | 2.3 | | 7:45 | Boxing Day | |
| SAT 31 | 12:17 | 2.8 | | 11:00 | New Years Eve | |
| JANUARY | | | | | | |
| SUN 01 | 12:54 | 2.9 | | 11:30 | New Years Day | |
| MON 02 | 13:34 | 2.9 | | 12:00 | | |
| SAT 07 | 18:16 | 2.5 | No/Sailing | 16:45 | | |
| SUN 08 | 19:24 | 2.5 | No/Sailing | 18:00 | | |
| SAT 14 | 12:18 | 3 | | 11:00 | Mini Regatta No 3 | |
| SUN 15 | 12:58 | 2.9 | | 11:30 | Mini Regatta No 3 | Drinks on Deck |
| WED 18 | | | | | | LASER NATIONALS- TAUPO |
| THU 19 | | | | | | LASER NATIONALS- TAUPO |
| FRI 20 | | | | | | LASER NATIONALS- TAUPO |
| SAT 21 | 17:46 | 2.2 | | 16:15 | Taupo cruise | LASER NATIONALS- TAUPO |
| SUN 22 | 18:55 | 2.2 | | 17:30 | | LASER NATIONALS- TAUPO |
| MON 23 | 19:32 | 2.1 | | 18:00 | | WELLINGTON ANNIVERSARY |
| WED 25 | | | | | | PT NATIONALS- PICTON |
| THU 26 | | | | | | PT NATIONALS- PICTON |
| FRI 27 | | | | | | PT NATIONALS- PICTON |
| SAT 28 | 11:23 | 2.8 | | 10:00 | Mark Foy 1+2+3 | WAITARA Regatta/ PT NATIONALS-PICTON |
| SUN 29 | 11:59 | 2.9 | | 10:30 | Mark Foy 4+5+6 | WAITARA Regatta/ PT NATIONALS-PICTON |
| FEBRUARY | | | | | | |
| FRI 03 | 15:33 | 2.7 | | 14:00 | MASTERS GAMES | MASTERS GAMES |
| SAT 04 | 16:32 | 2.6 | | 15:00 | MASTERS GAMES | MASTERS GAMES/ NEW PLYMOUTH Regatta |
| SUN 05 | 17:41 | 2.5 | | 16:15 | MASTERS GAMES | MASTERS GAMES/ NEW PLYMOUTH Regatta |
| MON 06 | 18:55 | 2.4 | | 17:30 | | WAITANGI DAY |
| SAT 11 | 11:23 | 2.9 | | 10:00 | Saturday Series 18+19+20 | |
| SUN 12 | 12:01 | 3 | | 10:30 | SUNDAY SERIES 18+19+20 | Drinks on Deck |
| SAT 18 | 15:47 | 2.3 | | 14:15 | STUDHOLM CUP/JUNIOR CLASS CHALLENGE | |
| SUN 19 | 16:43 | 2.2 | | 15:15 | STUDHOLM CUP/JUNIOR CLASS CHALLENGE | Drinks at Club on Deck |
| SAT 25 | 10:25 | 2.7 | | 9:00 | Saturday Series 21+22+23 | PTs Turangi Regatta |
| SUN 26 | 11:01 | 2.9 | | 9:30 | SUNDAY SERIES 21+22+23 | PTs Turangi Regatta |
| MARCH | | | | | | |
| SAT 04 | 15:16 | 2.8 | | 13:30 | Wanganui Regatta | Dinner at club supplied by wanganui members |
| SUN 05 | 16:03 | 2.6 | | 14:30 | Wanganui Regatta | |
| SAT 11 | 10:25 | 2.8 | | 9:00 | Saturday Series 24+25+26 | TAUPO Regatta |
| SUN 12 | 11:03 | 2.9 | | 9:30 | SUNDAY SERIES 24+25+26 | TAUPO Regatta |
| MON 13 | | | | | | TARANAKI ANNIVERSARY |
| WED 15 | 12:46 | 2.9 | | 11:15 | Secondary Schools Regatta | Secondary Schools Regatta |
| THU 16 | 13:19 | 2.8 | | 12:00 | Secondary Schools Regatta Spare Day | |
| SAT 18 | 14:26 | 2.5 | | 13:00 | Mini Regatta No 4 | Manawatu Regatta |

| | | | | | | |
|--------|-------|-----|------------|-------|--|--------------------------------|
| SUN 19 | 15:04 | 2.4 | | 13:30 | Mini Regatta No 4 | Manawatu Regatta |
| | | | | | | Drinks on deck |
| SAT 25 | 9:17 | 2.5 | No/Sailing | 8:00 | | |
| SUN 26 | 9:58 | 2.7 | Putiki | 11:00 | Leser & Bic challenge | |
| | | | | | | |
| | | | | | APRIL | |
| SAT 01 | 13:55 | 2.9 | | 12:30 | STUDHOLM CUP/JUNIOR CLASS CHALLENGE | All Boats 2x handicap 1x Champ |
| SUN 02 | 13:44 | 2.7 | D/L Saving | 12:15 | STUDHOLM CUP/JUNIOR CLASS CHALLENGE | All Boats 2x Champ 1x Handicap |
| | | | | | | Drinks on Deck |
| SAT 08 | 8:18 | 2.6 | Putiki | 11:00 | Intermediate Schools Challenge | |
| SUN 09 | 9:01 | 2.7 | No/Sailing | | | |
| | | | | | | |
| FRI 14 | | | No/Sailing | | EASTER | |
| SAT 15 | 12:22 | 2.6 | No/Sailing | 11:00 | EASTER | |
| SUN 16 | 12:56 | 2.5 | No/Sailing | 11:30 | EASTER | |
| MON 17 | | | No/Sailing | | EASTER | |
| | | | | | | |
| SAT 22 | 6:49 | 2.4 | No/Sailing | | | |
| SUN 23 | 7:43 | 2.5 | No/Sailing | | | |
| MON 24 | | | | | | |
| TUE 25 | | | | | ANZAC Day | ANZAC Day |
| | | | | | | |
| SAT 29 | 11:53 | 3 | | 10:30 | Mini Regatta No 5 | |
| SUN 30 | 12:38 | 2.9 | | 11:00 | Mini Regatta No 5 | Drinks on Deck |
| | | | | | | |
| | | | | | MAY | |
| Sat 13 | | | | 18:30 | Prize Giving | |
| | | | | | | |
| | | | | | JUNE | |
| | | | | | | |
| | | | | | JULY | |
| SUN 30 | | | | 14:30 | AGM | |
| | | | | | | |

2015 - 2016 Season Results

Shakedown Series

Open Class

1st Ken Bradshaw Equinox

Novelty Race Shield - 6 Hour Race

1st Equal Ken Bradshaw & Lindsay Stevenson

2nd Lisa McDonnell

3rd Stewart Thomas

Saturday Series

Trailer Yachts

1st Lindsay Stevenson

2nd Paul Squire

Paper Tigers

1st Jim Moore – Hot Gossip

Lasers

1st Ken Bradshaw

2nd Josh McDonnell

3rd Lisa McDonnell

Mark Foy

Open Class

1st Allen Geerkins

Lasers

1st Emma Thomas

2nd Josh McDonnell

W Neal Challenge Cup

(most improved Skipper)

Josh McDonnell

Kendrick Cup – (Sailor of the Year)

Sarah Lourie

WSC Cup for Hands – (Crew of the Year)

Ian Perry

John Rumney Cup (Junior of the Year)

Caleb & Luke Squire

Floyd Trophy – Services to the Club

Bob Davies

Terry Coles Cup

Kelvin Hobbs

W E Buller Memorial Champion Female Skipper

1st Lisa McDonnell

Hinemoa Cup – Most Promising Female Skipper

1st Sarah Lourie

Newick Trophy (Class Challenge Starlings)

Not sailed for

Studholm Cup

1st Lindsay Stevenson

2nd Shawn Thomas

3rd Jim Moore

4th Allen Geerkens & Ian Perry

Bethwaite Cup (Junior Champion)

1st Luke Squire

Seddon Memorial Cup (Junior Handicap)

1st Caleb Squire

Starlings – Dave Nicholson Cup

Not sailed for

Starlings – W Wilson Challenge Cup

Not sailed for

Open Class – Merchantile Cup (Championship)

1st Allen Geerkens & Ian Perry

Open Classes – Kiely Cup (Handicap)

Not sailed for

Laser Class – National Mutual Life Cup (Championship)

1st Lisa McDonnell

2nd Peter Reay

3rd Josh McDonnell

Laser Class – Wanganui Sailing Club Cup (Handicap)

1st Sheryl Ryland

2nd Dave Morrison

3rd Sam Powell

Paper Tigers – Scott Memorial Cup (Championship)

1st Grant Allen Touchwood
2nd Stewart Thomas
3rd Shawn Thomas

Paper Tigers – J Rose Cup (Handicap)

1st Andrew Montgomery

Trailer Yachts – Heather Russell Rosebowl (Championship)

1st Lindsay Stevenson

Trailer Yachts – Kutu Cup (Handicap)

1st Phillip Patterson

“Know Your Rules” Trophy

Stewart Thomas

Drews Cup – Champion of the River

Stewart Thomas

Muggins Memorial

Linklater Trophy – Wanganui / Manawatu Interclub Challenge

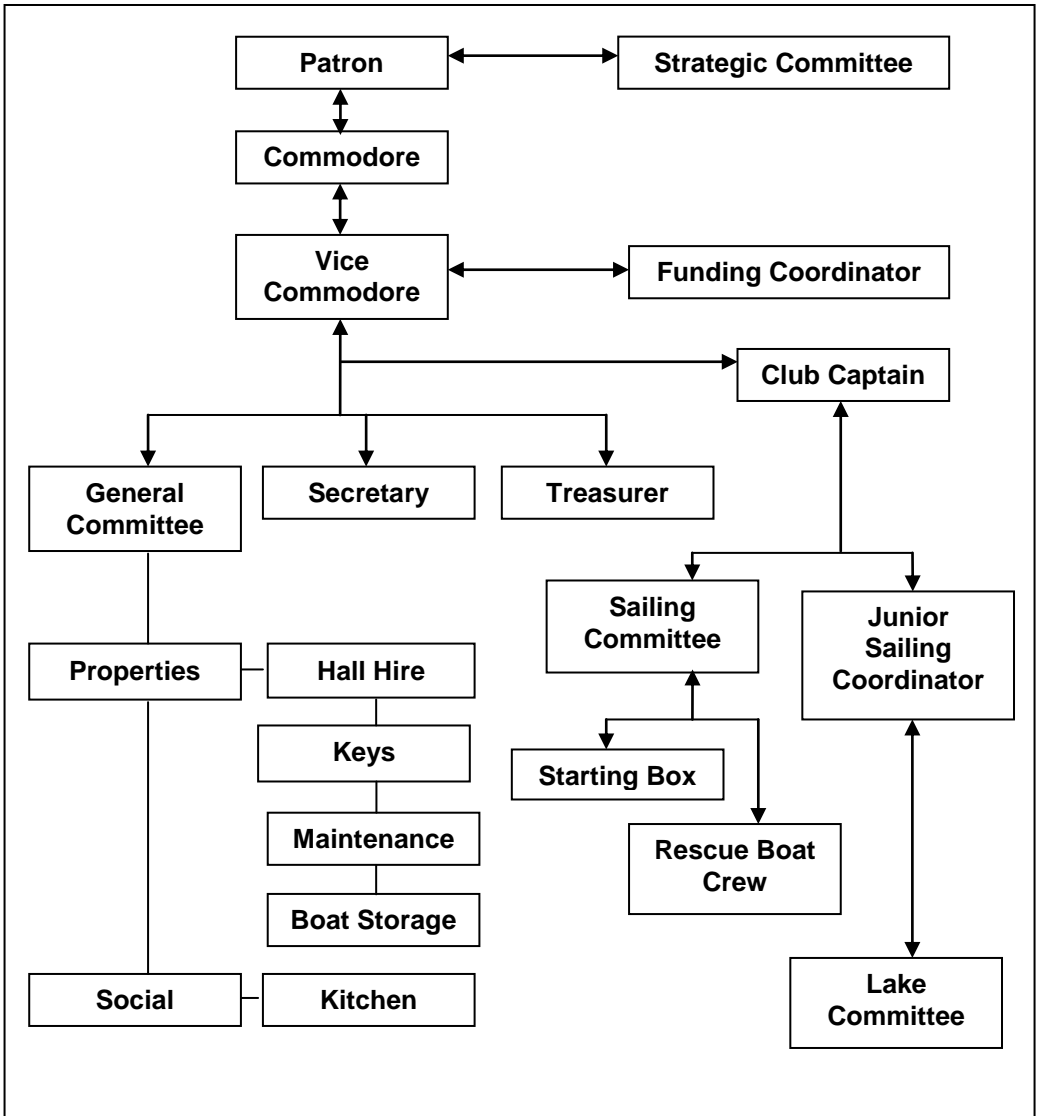
Programme Clarifications

All Western Districts Yachting Association Regattas and open to all Current Membership on payment of the prescribed entry fee. Club races are open to all financial members of a Yacht/Sailing Club as at 31 October or new members on payment of the required Subscription.

1. The Sunday Series will be both Championship and Handicap Series.
2. Saturday and Twilight series will be raced using Boat Ratings.
3. The Studholm Cup will be mixed Championship Ratings and Club Handicaps
4. For overall Championship/Handicap results, counted races will be as follows:
$$\text{SCORED RACES} = \text{INT}((\text{NUMBER OF RACES HELD} * 70) / 100)$$
5. In the event of a tie for any place the procedure described in Appendix A paragraph A8 of the Yacht Race rules will be used.
6. In determining overall results a Championship place will preclude a handicap place.
7. Races may be held at sea, at the discretion of the sailing committee, providing a minimum fleet of five boats are entered and available to start for that individual race, and that safety requirements for all boats have been met. Any boat not meeting the safety requirements will be ineligible to compete.
8. The Competitor's individual average points will be allocated to any person not starting in a Club race due to attendance at a nationally recognised or advertised Western Districts event. Please advise Box officials.
9. Competitors requested by the Sailing Committee to act as Race Officials shall be allocated their average points for the series, for that race.
10. A boat must compete in the minimum number of races in a series for it to be eligible for a position in the result.

$$\text{MINIMUM RACES} = \text{INT}((\text{NUMBER OF RACES} * 50) / 100)$$

Club Management Structure



Mission Statement

Sailing Wanganui will develop and secure partnerships and implement financial and reporting structures that ensure long term financial security of the organisation. Reserves will be established and utilised to ensure the ongoing supply of plant to meet the Club's development needs.

Sailing Wanganui will be recognised as the organisation in the region for the provision of sailing opportunities that allows any individual to reach their potential.

Sailing Wanganui, through its staff, volunteers and members, will work with pride, professionalism, enthusiasm and innovation to become the recognised leader of sailing in Wanganui. Staff development will recognise and build skills to ensure that they are leaders in their respective fields of work.

Sailing Wanganui will build participation through the provision of quality sailing opportunities and events and by connecting with new customer groups. Sailing Wanganui will develop a culture of "fun for everyone". The Club will be recognised as the leading provider of innovative and quality events, facilities and promotions for the development of sailing in the region. Acting as a centre of excellence for the development of sailing in Wanganui it will also be recognised as the leading advocate of the development of sailing in the region.



LiquorLand

Sailing Instructions

The Organizing Authority is WANGANUI SAILING CLUB inc.

1.0 Rules

- 1.1 All races will be governed by the 'rules' as defined in the Racing Rules of Sailing.
- 1.2 The YNZ Safety Regulations are deemed to be part of the Sailing Instructions
- 1.3 In an event, race or series of races that Class Ratings or Handicaps are applied to determine final results the onus is on participants to ensure that the boat they have entered complies with Class rules for that type of boat.

2.0 Notices to Competitors

- 2.1 Notices to competitors will be posted on the official notice board in the clubhouse.

3.0 Changes to Sailing Instructions

- 3.1 Any change to the Sailing Instructions will be posted at least 55 minutes prior to the warning signal of the race it will take effect, except that any change to the schedule of races will be posted on the scheduled Club day before it will take effect.
- 3.2 Studholm Cup. This Cup is raced for by the whole fleet. Races sailed on Saturday(s) are on boat ratings and Sundays on club handicaps and the results aggregated.

4.0 Life Jackets

- 4.1 All crew members shall wear life-jackets or other personal buoyancy. Wetsuits & dry suits are not adequate personal buoyancy. This changes rule 40.

5.0 Schedule of Races

- 5.1 Racing is scheduled as per the published race programme.

6.0 Class Flags

- 6.1 Will be the number pennant corresponding to the order of start for each day.

7.0 Signing On and Off when finished

- 7.1 All skippers must sign on prior to the start of the first race each day. The sign on sheets will be placed in the clubhouse near the course board.
- 7.2 All Skippers must sign off when finished racing. Skippers not intending to start the second race of the day, or skippers who retire from a race shall notify the race committee in the start box and sign off. The sign off board will be located near the showers on the ground floor of the Clubhouse.

8.0 Racing Area

- 8.1 All courses will be sailed on lower reaches of the Wanganui River or as otherwise advertised in the published race programme.

9.0 The Courses

- 9.1 The courses will be illustrated at least 30 minutes before each race on the course board. Races to be sailed 'Back to Back' will be indicated on the course board.

10.0 Marks

- 10.1 All course marks will be orange buoys.
The Start mark will be a yellow buoy for club house start and may be orange for a boat start
The Finish mark will be a yellow buoy for club and may be orange for a boat finish
The Distance mark will be a yellow buoy

11.0 Clubhouse starting procedure

- 11.1 The Start shall be as follows:

1 minute Warning; one blast of horn, three lights displayed in start box window along with class start number. The lights will go off at one minute intervals.

0 minutes – start; one blast of the horn as the last light goes off and the removal of the class number from the window.

The start signal is the four minute warning for the next start sequence which will commence in one minute with one blast of the horn and the illumination of three lights and display of the class number for the next start. The lights will go off at one minute intervals with the start of that class indicated with one blast of the horn as the last light goes off and the class number is removed from the window. This changes rule 26.

- 11.2 Classes shall start in the order displayed with the course:
Numbered boards indicating the start order shall be used in instruction 11.1 and shall be displayed in the start box window. This changes Instruction 6, for the duration of the start sequence.
- 11.3 The starting line will be between the painted line on the clubrooms under the starting box and the outer starting mark.
- 11.4 All boats must start between the outer starting mark and the inner distance mark.
- 11.5 Boats whose warning signal has not been made shall avoid the starting area.
- 11.6 A boat starting later than 10 minutes after her starting signal will be scored 'Did Not Start', this changes rule A4.
- 11.7 When starting is done from a committee boat, rule 26 of the racing rules applies, the finish is still done at club finish line as per instructions N013

12.0 Committee Boat Starting procedure

12.1 Boat Starts will be in accordance with YNZ rules xxx

13.0 Shortened Course for club house start/finish

13.1 The flying of code flag 'S' on or near a rounding mark, means the race has been shortened. Boats shall round this mark and proceed directly to the finish line. (Boats shall sail through the finish line from the direction of this mark) This changes race signal S.

13.2 The flying of a class flag(s) with code flag 'S' means instruction 12.1 only applies to that/ those class(es)

13.3 Shortened Course for Boat Starting/Finish

This will be in accordance with YNZ rules xxx

14.0 Clubhouse Finishing procedure

14.1 The finishing line will be between the line painted on the club rooms under the starting box and the outer finishing mark.

14.2 All boats must finish between the outer finish mark, and the inner distance mark.

14.3 Yachts must not re-cross the finishing line in the direction of the course after finishing and clearing the finish line.

15.0 Committee Boat Finishing procedure

15.1 The finishing line will be between the orange flag on the Committee Boat and the outer finishing mark.

15.2 All boats must finish between the Committee Boat and the outer finish mark.

15.3 Yachts must not re-cross the finishing line in the direction of the course after finishing and clearing the finish line.

16.0 Time Limits

16.1 Boats still racing but failing to finish within 15 minutes of the first boat in her class may be given a finishing position based on their place at the last mark they rounded, their score will be greater than any boat who rounded further marks or who finished .OR the boat may be scored "Did Not Finish" This changes rules 35 and A4.

15.0 Protests and Requests for Redress

15.1 Protest forms are available from the race office. Protests shall be delivered there within the protest time limit.

15.2 For each class, the protest time limit is 30 minutes. The protest time shall start at the end of the days racing, and shall be signalled by the flying of code flag B from the clubhouse. The same protest time applies to all protest by the race committee and to requests for redress. This changes rules 61.3 and 62.2

- 15.3 Notices will be posted within 30 minutes of the protest time limit to inform competitors of the date and time of hearings in which they are parties or named as witnesses
- 15.4 The Protest committee may award a time penalty at any protest hearing in place of disqualification.

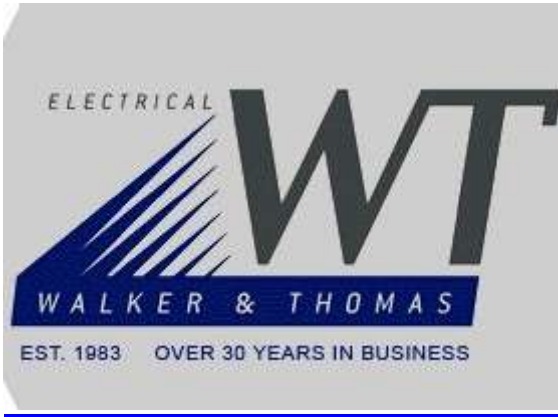
16.0 Scoring

- 16.1 The Low Point scoring system of Appendix A shall apply.
- 16.2 When fewer than 6 races have been completed, a boat's series score will be the total of her race scores. When 7-8 races are sailed one race will be dropped and more than 9 races 2 races dropped.

17.0 Disclaimer of Liability

- 17.1 Competitors participate in any event entirely at their own risk. See rule 4, Decision to Race. The organising authority will not accept any liability for material damage or personal injury or death sustained in conjunction with or prior to, during, or after any event.





Event Modification Notices

The following additions and variations to Event and Race Management will be applied when a race or event of any type is conducted, either at the club or at any other venue, which would normally call for an alteration to the published Sailing Instructions. They shall only be applied if the Yachting New Zealand Racing Rules of Sailing and Sailing Wanganui Sailing Instructions are either silent or state procedures that are inappropriate for the event and or location, and in this case are deemed to be part of the Sailing Instructions.

Paragraphs 3, 6, 7, 8 and 9 from the local Sailing Instructions may be deleted.

Marks (This replaces paragraph 10 of the local Sailing Instructions)

Marks may be of any colour and type and may be replaced by a structure or landmark when appropriate. The type of mark shall be advised to all participants a reasonable period before the first race of any event. This notification by the Principle Race Officer may be verbal, and the onus is on all participants to ensure understanding of the course layout to be used.

The Start (This replaces paragraph 11 of the local Sailing Instructions)

The Start shall be conducted by flags which may be accompanied by a sound signal.

The type of flag and sequence timing shall be advised to all participants a reasonable period before the first race of any event. This notification by the Principle Race Officer may be verbal, and the onus is on all participants to ensure understanding of the systems to be used.

The Finish (This replaces paragraph 13 of the local Sailing Instructions)

The Finish procedure shall be advised to competitors with the course.

Mixed Class Racing

In the event of a protest or blatant disregard of the Sailing Instruction 1.3 requirement the Race Committee, without needing recourse to the protest committee, may make any adjustment to the rating or handicap deemed necessary. In the event of a dispute the onus is on the offending boat owner or representative to prove compliance with Class Measurement Rules.

Championship & Handicap

Championship Rating System (September 2014)

The following are the class ratings applicable to boats being sailed in races controlled by Sailing Wanganui.

| | | | |
|----------------|------|--------------------|-------|
| 470 | .960 | Optimist | .570 |
| Noelx 22 | .806 | P Class | .650 |
| Byte | .850 | Paper Tiger | 1.110 |
| Davidson 20 | .686 | Splash | .800 |
| Europe | .850 | Starling | .750 |
| Farr 5000 | .690 | Sunburst | .750 |
| Farr 6000 | .750 | Sunburst (no Spin) | .730 |
| Hartley 16 | .720 | Topper | .740 |
| Int Moth Wings | .860 | RS Feva | .790 |
| Laser | .870 | Heron | .690 |
| Laser Radial | .860 | NZ Moth | .870 |
| Laser 4.7 | .790 | Kestral 18 | .700 |
| Micron 3 | .780 | Tasman 20 | .747 |

To calculate corrected time, use the following formula:

$$\text{'Elapsed Time'} \times \text{'Rating'} = \text{'Corrected Time'}$$

Handicap Rating System

Each Skipper and boat combination is allocated a rating for the purposes of calculating handicap systems. This rating is a maximum of 1 (equal to 0% using percentages) down to whatever is necessary. All calculations are made (using the above formula) on the boats elapsed time with no adjustments made for the type of boat.

Using the elapsed time for this calculation evens out any local performance variations for boats being sailed better or worse than the national average. Handicap ratings are set and modified over as many race results as possible to even out unusually good, or bad, one off results.

Safety

Trailer Yacht Safety Requirements For Racing At Sea.

Each yacht shall have:-

- approved buoyancy aids, in good condition, for all crew to be worn at all times.
- one 600 x 600 or larger orange flag for waving (distress flag)
- a reliable compass.
- one manual bilge pump or one bucket of stout construction with a 9 litre minimum capacity, with a lanyard attached.
- a fire extinguisher with a minimum of 0.9 kg dry powder or equivalent.
- a first aid kit, well stocked.
- an anchor and sufficient chain and warp securely attached.
- an outboard motor with sufficient fuel.
- a transceiver type radio (preferably a marine type VHF)

**Special note: These requirements are the absolute minimum.
Any yacht found not to be meeting these conditions will be disqualified.**

Rescue Boat Requirements.

The rescue boat shall have:-

- a minimum of 2 crew, all of whom shall be wearing approved buoyancy aids.
- sufficient fuel
- the responsibility of conducting the racing at sea and may at any time, change, shorten, abandon the racing if in their opinion the conditions warrant such a measure.

Winter Series Race Management.

A committee of three experienced skippers including the rescue boat driver to decide on race condition suitability taking into account:-

- An up to date weather forecast.
- The bar condition, no yacht shall attempt to cross the bar until notification from the rescue boat deems the conditions suitable.

Club Constitution

Rules of: The Wanganui Sailing Club (Incorporated)

1. Name:

The name of the Society is The Wanganui Sailing Club (Incorporated) – which trades as Sailing Wanganui - hereinafter referred to as “Sailing Wanganui”.

2. Objects:

The objects for which Sailing Wanganui is established are -

(a) To conserve, promote and advance generally, boat building and sailing, and to encourage by all means within its power the racing and use of sailing craft, and the provision of ancillary facilities.

(b) To conduct races of sailing craft under the Rules issued by the International Yacht Racing Union and such special provisions as may be required by the Royal Yachting Assn. of Gt. Britain, the New Zealand Yachting Federation, the North Island Western Districts Yachting Assn. and the sailing instructions issued by Sailing Wanganui.

(c) To seek redress of wrongs from which all or any of the Members of Sailing Wanganui may from time to time suffer. To promote or oppose bills legislative, or other measures, or by-laws affecting the interests of Members. Make representations by way of deputations and otherwise bring under the notice of the Government of New Zealand, or of any other Constituted authority, such matters as in the opinion of Sailing Wanganui require attention or alteration.

(d) To use the funds of Sailing Wanganui as the Club may consider necessary or proper in payment of the costs and expenses and furthering or carrying out those objects or any of them, including the employment of Council, solicitors agents, officers and servants as shall appear necessary or expedient.

(e) To subscribe to, or to become a Member of, or cooperate in any other organisations having similar objects.

(f) To acquire or take on lease, any real or personal property and any rights or privileges for the purpose to develop or erect buildings.

(g) Generally to do all other such things incidental to, or conducive to, the attainment of the above objects.

3. Membership:

(a) Sailing members shall be of either sex and may be either Senior, Intermediate, or Junior Members, or Life Members as nominated by the General Committee and approved by the A.G.M.

(b) Honorary Members shall be those elected as such by the Committee.

Senior Members shall be 19 years of age or over as of the 1st September each year.

Junior Members shall be those less than 19 yrs of age as of the 1st September each year.

Associate Members shall be non-sailing Members and shall be elected as such by the Committee because the interest shown by them is deemed to be such as to warrant the right to vote.

(c) Only Senior, Junior and Associate Members are privileged to vote upon any motion before either a Special or an Annual General Meeting.

- (d) New Members shall be admitted upon election by the Committee, but no person shall be presented as a candidate for election without any application in writing, signed by himself and two Members, being first lodged in the hands of an Officer of the Club.
- (e) Every Member shall on or before opening day in every year and forthwith upon his election to Sailing Wanganui, in the case of a new Member pay to Sailing Wanganui such annual subscription as shall from time to time be determined by the Committee.
- (f) Every Member shall, in addition to all other monies payable by him, forthwith pay to Sailing Wanganui every sum or sums of money not exceeding in any one case the amount of his annual subscription for the current year, which shall at any time, and from time to time by resolution in general meeting be levied upon him as a Member of Sailing Wanganui, and which shall consider necessary or expedient for the purpose of furthering the interests of Sailing Wanganui or its Members.
- (g) Sailing Wanganui may impose upon any Member whose subscription, whether annual or boat storage rent, and other contribution is in arrear and unpaid for the space of one calendar month from the due date thereof, a fine not exceeding 10 per centum of the amount of such arrears, or any other penalty that the Committee may feel fit.
- (h) Any Member may resign from his Membership by giving to the Secretary notice in writing to the effect, and every such notice shall take effect as from the end of the financial year then current.
- (i) If any Member shall be considered of an indictable offence then such Member shall forthwith cease to be a Member, but Sailing Wanganui in its discretion may re-instate him.
- (j) Sailing Wanganui may at any time, by letter, invite any Member within a specified time to retire for breach by him of these rules, and in default of withdrawal to submit the question of his expulsion to a General Meeting to be held with 3 calendar months from the date of such letter, and at such meeting a Member whose expulsion is under consideration shall be allowed to offer an explanation verbally and/or in writing, and if thereupon two-thirds of the Members present shall vote for his expulsion he shall forthwith cease to be a Member, providing that voting at any such meeting shall be by ballot if so demanded by not less than five Members.
- (k) All Members shall be bound by such Rules as the Committee may from time to time make relating to the property of Sailing Wanganui or to the disposition of the property of Members when that property is on Club premises.

4. Alteration To Rules:

- (a) By Notice of Motion these Rules maybe altered, added to, rescinded or otherwise amended by a Resolution passed by a three-fourths majority of those present at a General Meeting of which 7 days notice has been given.

5. General Meetings:

- (a) The Annual General Meeting shall be held either in the month of July or August in every year upon a date and at a time and place fixed by the Commodore, or in his default, absence or inability, by the Committee for the following purposes:
- (1) To receive from the Committee a report, Balance Sheet and Statement of Accounts for the preceding year, and an estimate of the receipts and expenditure of the current year.
 - (2) To appoint Officers of Sailing Wanganui as described in Clause (6) thereof, for the ensuing year.
 - (3) To decide on any items of business duly submitted to the Meeting to be allowed at the discretion of the Chairman.
 - (4) To approve any nomination made by the General Committee for Life Membership.
-

- (5) To make recommendations to any of the incoming Committees.
- (b) The Commodore, or in his absence or inability, any other Member of the Committee, may at any time for any special purpose, call a Special General Meeting, and he shall do so forthwith upon the requisition in writing of any eight Members stating the purpose for which the Meeting is required.
- (c) Seven clear days before either a Special General Meeting, or the Annual General Meeting, a notice thereof and of the business to be transacted together with the copy of the report and Balance Sheet, in the case of the A.G.M. shall be sent to every Member and no business other than of which notice has been so given shall be brought forward at such meeting.
- (d) Every notice required to be given to the Members shall be deemed to have duly delivered if posted to him in a prepaid letter addressed to him at his last known place of business or residence.
- (e) The Commodore, or in his absence or inability, or any other duly elected Chairman, shall at all General Meetings take the Chair and such Members as are defined in Rule 3 (a), shall be entitled on every motion, to 1 vote exercised in person or in writing and in the case of an equality of votes the Chairman shall have a casting as well as a deliberative vote. Such votes shall be exercised by a show of hands, or if the Chairman or 3 Members present shall so request, shall be by ballot.
- (f) At all General Meetings, 20 Members eligible to vote, shall constitute a quorum.

6. Management:

- (a) At every A.G.M. held, Sailing Wanganui shall elect an Executive Committee of the following Officers, namely: a Commodore, a Vice-Commodore, a Club Captain, a Secretary, a Treasurer, an Auditor, and 5 Committee Members, of whom one may be an Intermediate Member. All of such Officers shall hold office until retirement or removal from office or election of successors to office. The Immediate Past Commodore shall be ex-officio, a Member of the Committee. In addition, also elected by Sailing Wanganui, a Sailing Committee of Members, one of whom may be either an Intermediate or Junior Member.
- (b) The Executive Committee shall have power to appoint a Member to fill any casual vacancy or to co-op such additional Committee Members as maybe required until the next A.G.M. and any Member so appointed shall retire at the next A.G.M. together with the rest of the Committee, but all or any of the retiring Committee shall be eligible for re-election on the Committees.
- (c) The Executive Committee shall at its first meeting following its election at the A.G.M. appoint Starting Box Officials and Rescue Boat Crews.
- (d) It shall be the duty of the Executive Committee, generally, to conduct the affairs of Sailing Wanganui, to keep usual and proper books of accounts properly posted up, and other records of business of Sailing Wanganui and to notify Members of intended meetings, and the business to be transacted thereat, and to prepare and submit to the A.G.M. a report, Balance Sheet, and Statement of Accounts for the preceding year. Meetings of the Committee shall be held monthly and 5 shall be a quorum.
- (e) The Sailing Committee, with the Club Captain as Convener shall be responsible for the conduct of all sailing race events held where Sailing Wanganui is advertised as the organizing authority. The Sailing Committee shall conduct itself with due regard to, the " IYRU rules of sailing and race Management", the "Yachting New Zealand Racing Rules of Sailing and Safety Regulations". Modifications required due to local procedure and conditions shall be published in the form of The Sailing Instructions, which shall be published and made available to all members.
- (f) The Sailing Committee shall each year before the AGM prepare a draft sailing program for ratification by the Incoming Sailing Committee and General Committee.

(g) The Sailing Committee will receive their basic recommendations from the A.G.M. Any variations to policy, or expenditure any must be approved by the General Committee.

(h) Strategic Committee. The Strategic Committee shall be chaired by the Patron whom has the power to elect whoever he feels is suitable, and is in the clubs best interest, members to that committee.

7. Finance:

(a) All monies received by, or on behalf of Sailing Wanganui, shall forthwith be paid to its credit in an account with the a bank from time to time to be fixed by Sailing Wanganui, and all cheques or withdrawal slips drawn on the accounts shall be signed by two of either the Treasurer, Secretary or nominated Committee member provided always that resolutions authorizing the disbursement of monies have been passed by the Committee.

(b) The Committee may, from time to time, invest and re-invest in such securities and upon such terms as it shall think fit, the whole or any part of Sailing Wanganui's funds which shall not be required for the Club's immediate business.

(c) Sailing Wanganui shall, in addition to the other powers vested in it, have a power to borrow or raise money from time to time by the issue of debentures, bonds, mortgages, or any other security founded or based on all or any of the property and/or rights of Sailing Wanganui, or without any such security and upon such terms as to priority and otherwise as Sailing Wanganui shall think fit, but the powers of so borrowing or raising money shall not be exercised except pursuant to a resolution of the Club passed in general meeting.

8. Dissolution:

In the event of Sailing Wanganui being wound up, the surplus assets after payment of Sailing Wanganui's liabilities and the expenses of winding up, shall be paid, disposed of or distributed to such charitable organisations whose objects are similar to those described under Clause 2 (Objects) in such shares and in such manner as shall be determined by the Members of Sailing Wanganui at, or before, the time of dissolution.

9. Interpretation:

In the event of any dispute arising in any interpretation of these rules, the Committee's decision shall be final.

10. Badge and Colours:

The Club's operational logo will be a design as agreed by the Committee.

The Club's colours to be white and blue.

Sailing Wanganui badge to be a design held by the Secretary

Boat Register

(updated 7 September 2015)

| Class: | Boat Name: | Sail No: | Owner: |
|------------|-----------------|----------|----------------|
| Optimist | 20 Club Boats | | |
| P Class: | Snoopy 11 | 4 | Club |
| | Invader 11 | 8 | Club |
| Starlings: | Deacon Blue | 1050 | Club |
| | Girlfriend | 105 | Club |
| | Panache | 1069 | Club |
| | Get In Behind | 503 | Club |
| | Skin Deep | 679 | Club |
| | Pelican | 733 | Club |
| | Thwing | 953 | Club |
| | Live It Up | 161 | Club |
| | Sirius | 175 | Ben Bettridge |
| Open Bics | Striker | 2025 | Jack Southee |
| | 1 | | Club |
| | 2 | | Club |
| | 3 | | Club |
| | 4 | | Club |
| | 5 | | Club |
| | 6 | | Club |
| Moths: | Big Red | 82 | Club |
| | Gypsy Moth | 285 | Club |
| | Mothalator | 007 | Allen Geerkens |
| | Mouse Trap | 969 | Club |
| | Mid Life Crisis | 826 | Club |
| Lasers: | Kijang | 167009 | Bill Walmsley |
| | Black Pearl | 150014 | Sheryl Ryland |
| | Slip Stream | 136724 | Keith Ryland |
| | Rosso | 147850 | Alan Brider |
| | Buttercup Baby | 167009 | Dave Morrison |
| | | 18022 | Kelvin Hobbs |
| | Equinox | 46123 | Ken Bradshaw |
| | Lickity Split | 131874 | Club |
| Topaz | Blue | | Club |
| | Topaz | | Gregor Vallely |

| | | | |
|---------------|----------------------------|-------|-----------------------|
| R Class | ##### | | Club |
| Sunbursts: | Golden Cowie | 1379 | Club |
| | Kohinui | 1468 | Club |
| | Tigger | 1378 | Club |
| | Rags | 1469 | Club |
| | Varnish | 426 | Club |
| 470's | Kaos | 56 | Mike Smith |
| | Sotally Tober | 160 | Leanne & Dean Wills |
| | Eggnog | 180 | Allen Geerkens |
| | Mantis | 1 | Mark Stroud |
| 420's | 420 | 51642 | Jason/Natasha Bowling |
| Paper Tigers: | ##### | 247 | Ted Matthews |
| | Hot Gossip | 2868 | Jim Moore |
| | Elanarose | 397 | Jim Moore |
| | Katana | 2359 | Andrew Montgomery |
| | Wishbone | 2501 | John Goodare |
| | Scotch Mist | 2502 | Ian MacKay |
| | Blue Moon | 2905 | Stewart Thomas |
| | Touchwood | 2907 | Grant Allen |
| | Bruiser Back | 2502 | Shawn Thomas |
| | | 2767 | Andrew Montgomery |
| | Tips a bit | 669 | Ben Betteridge |
| Sabot | Wanganui Insurance Brokers | | Club |
| Micron | Moon Dance | 187 | Sheryl Ryland |
| Tasman 20 | Tasman Girl | 102 | Alan Brider |
| Farr 6000: | Vivace | 2229 | Phillip Paterson |
| | Beach Loop | 3889 | Lindsay Stevenson |
| Hartley 16: | Spritzig | 207 | Bob Davies |

Use of Club Boats

Club boats are available for new members to use on application to the Sailing Coordinator or the Commodore. The cost of using boats for the season is the full membership plus the storage fee for the class of boat. Boats are reallocated at the beginning of each season.

Agreement to Use a Club Boats

I (Club Member) agree that I will be responsible for:

1. **Maintaining the club boat in good repair**
2. **Returning the allocated boat to the club in good condition**
3. **Being a paid up club member**
4. **The payment to use a Club boat for the season set at \$100. Boats will be required to be stored at the club.**
5. **Sailing on a regular basis**
6. **Any damage caused to the boat.**

The Sailing Wanganui, (the club) agrees to provide the club boat (type).....
Named.....and sail number

The Club reserves the right to cancel this agreement if the boat is not being looked after, or if it is not being sailed, and to reallocate the boat to another club member.

The club agrees to provide the boat in good condition. Any major repairs or modifications are to be discussed with the Commodore.

.....
Club Member

.....
Parent(Guardian)

.....
Date

Coaching Co-ordinator
Bob Davies
Ph. 345 7155

P O Box 594
70 Gilbert Street
Wanganui

www.sailingwanganui.co.nz
secretary@sailingwanganui.co.nz

Season Subscriptions & Storage Fees

Type of Membership

| | |
|--|----------|
| Associate | \$40.00 |
| Junior Under 19 (on 1 September of the season) | \$60.00 |
| Senior | \$230.00 |
| Family | \$285.00 |
| Casual Sailor – up to 6 sailing days or full membership | \$80.00 |

Boat Storage

| | |
|--------------------------------------|----------|
| Optis, P Class, Starlings, Open Bics | \$135.00 |
| Larger Mono Hulls | \$145.00 |
| Catamarans | \$175.00 |
| Windsurfers | \$95.00 |
| Trailer Yachts 18' & less | \$400.00 |
| Trailer Yachts over 18' | \$500.00 |

- New members joining before 31st December pay the normal subscriptions.
- New members joining 1st January pay half of the normal subscription.

Payment options:

| Internet Banking Y/N | Reference | Cheque Y/N | Instalments Y/N |
|---|---------------------|-------------------|---|
| Wanganui Sailing Club Account No.: 06-0793-0025629-00 | your surname | | contact – treasurer@sailingwanganui.co.nz |

Note: Boats are stored at the owners risk. The Club will not accept any liability in the event of loss or damage to any boat or gear being stored. However, the Club will hold responsible any member who through their actions places Club or members property at risk.

Membership as at Jun 2016

| First Name | SURNAME | Address | City | Membership 2012 | Email | Phone |
|------------|-----------|--|---------------|-----------------|---|----------------------------|
| Grant | Allen | 28 Broadhead Ave 638 Rapanui Road | Wanganui | Senior | grantallen58@gmail.com | 06 344 4281 |
| Matthew | Barron | RD4 | Wanganui | Junior | barbdev1@gmail.com | 027 210 9881 |
| Karyn | Bishop | 11 Fraser Pl. | Wanganui 4500 | Senior | khr@actrix.co.nz | 06 343 3328 |
| Ken | Bradshaw | 17 Tregarth Street | Wanganui | Senior | bradsh@xtra.co.nz | 06 34503472 |
| Baz | Broadhead | 28 May Street | Wanganui | Associate | Bts@ihug.co.nz | 06 347 8221 |
| Alan | Bridger | 43 Benefield Street | Wanganui | Life | abhab_@xtra.co.nz | 06 343 9973 |
| Anton | Burberry | 60A Bignell Street | Wanganui | Junior | eburb66@yahoo.co.nz | 344 1182 |
| Brandon | Burberry | 60A Bignell Street | Wanganui | Junior | eburb66@yahoo.co.nz | 344 1182 |
| James | Burberry | 60A Bignell Street | Wanganui | Junior | eburb66@yahoo.co.nz | 344 1182 |
| John | Channon | 5 Bastia Ave 885 Rangitautau West Rd Maxwell | Wanganui | Life | John_s_p@xtra.c... cricklecreekfarms@farmside.co.nz | 06 343 2332 |
| Izaak | Coe | 3 Akepiro Place | Wanganui | Junior | | 0278 727 185 |
| Leonie | Coles | | Wanganui | Life | | 06 344 4273 06 345 7155 |
| Bob | Davies | 6 Tulloch Street | Wanganui | Life | bob_davies@xtra.co.nz | 021 165 5152 |
| Alex | Deerness | | Wanganui | Life | | |
| Allen | Geerkens | 15 Bristow Street | Wanganui | Senior | altrud@infogen.... | 06 348 7227 |
| John | Goodare | RD1 | Wanganui | Family | john.goodare@mo... | 06 342 1854 06 348 7136 |
| Sebasien | Harens | 170B West Street | Feilding | Junior | snerah@icloud.com | 06 324 0113 06 347 2974 |
| Kelvin | Hobbs | 19 Brassey Road | Wanganui | Associate | kelvinhobbs@cle... | 027 497 6185 |
| Joyce | Hucker | 61 Polson Street | Wanganui | Life | | |

| | | | | | | |
|---------|----------------|---------------------|------------------|-----------|--|----------------------------|
| Bruce | Jones | 2 Tangi Street | Wanganui | Family | Bjoneskombi@gmail.com | 342 9994 |
| Anna | Jones | 2 Tangi Street | Wanganui | Family | | |
| Solana | Jones | 2 Tangi Street | Wanganui | Family | | |
| Leo | Jones | 2 Tangi Street | Wanganui | Family | | |
| Oliver | Jones | 2 Tangi Street | Wanganui | Family | | |
| Eli | Kuehue | 10 Arran Place | Wanganui | Junior | skuehue15@gmail.com | 343 8587 |
| Barry | Leahy | 18 Ingestre Street | Wanganui | Life | barry@computer.c... | 06 345 8748 |
| Russell | Lowry | | Wanganui | Family | eglowry@xtra.co.nz | |
| | | | Palmerston North | | | |
| Gordon | Maines | 83A Pahiutua Street | North | Senior | | 027 285 0283 |
| Lisa | McDonnell | 39 Hereford Street | wanganui | Family | | |
| | | | | | l.mcdonnell173@gmail.com | |
| Josh | McDonnell | 39 Hereford Street | Wanganui | Family | | 06 344 5037 |
| John | McLennan | 11 College Street | Wanganui | Associate | JEMcLennon@xtra... | 06 347 1588 |
| Deirdra | McMenamin | 963 Brunswick Road | Wanganui | Family | deirdra@xtra.co.nz | 342 1026 |
| Teacara | McMenamin-Wood | 963 Brunswick Road | Wanganui | Family | | |
| Aoife | McMenamin-Wood | 963 Brunswick Road | Wanganui | Family | | |
| Mark | Wood | 963 Brunswick Road | Wanganui | Family | | |
| Cian | McMenamin-Wood | 963 Brunswick Road | Wanganui | Family | | |
| Phil | Meade | 13A Fitzherbert Ave | Wanganui | Senior | panda@infogen.n... andy.monty@yahoo.co.nz | 06 344 5856 021 491 157 |
| Andrew | Montgomery | 77a Alma Road | Wanganui | Senior | andy.monty@yahoo.co.nz | 027 288 5545 |
| Jim | Moore | 144 Blueskin Road | RD 1 Wanganui | Senior | jim.moore@opus.... | 06 348 8181 |

| | | | | | | | |
|---------|-----------|--------------------------|------------|-----------------------|------------|--|-----------------------------|
| Joshua | Oakman | 64 Bignell Street | | Wanganui | Junior | oakmanz64@gmail.com | 344 1403 |
| Joseph | Oakman | 64 Bignell Street | | Wanganui | Junior | oakmanz64@gmail.com | 344 1403 |
| Philip | Paterson | 53 Burtts Road | Durie Hill | Wanganui | Family | phildipaterson@... | 06 345 9234 |
| Ian | Perry | C/- Specsavers | | Wanganui | Senior | | |
| James | Prime | 76 Paterson St | | Wanganui | Associate | | |
| Peter F | Reay | 27A Long Melford Road | | Palmerston North 4412 | Senior | preay@ihug.co.nz | 06 3573372 |
| Ken | Roddick | 10 Wakefield Street | | Wanganui | | | 06 347 7856 |
| Keith | Ryland | 220 Rangitatau West Road | RD 17 | Wanganui | Family | sheryl&keit... | 06 342 3857 |
| Sheryl | Ryland | | | Wanganui | Family | | |
| Mike | Smith | 14 Virginia RD | | Wanganui | Associate | mike_smith@moh... | 06 345 1784 |
| Martin | Smith | 14 Wikitoria Road | | Wanganui | Junior | belmar4376@gmail.com | 342 6644 |
| Paul | Squire | 55 Liverpool Street | | Wanganui | Family | paul@squire.co.nz | 021 778 473 |
| Lindsay | Stevenson | | | Wanganui 4501 | Senior | | 06 348 2030 027 498 6309 |
| Stewart | Thomas | PO Box 4090 | | Wanganui | Life | stew@walkerthomas.co.nz | 06 344 7503 |
| Shaun | Thomas | | | | Senior | | |
| Bill | Walmsley | 42 Durie Vale Road | | Wanganui | Senior | billwalmsley@g... trevor.wilson@opus.co.nz | 06 347 1565 |
| Trevor | Wilson | 7 Kapiti Terrace | | Wanganui | Family | z | 027 704 5813 |
| Elza | Wilson | 7 Kapiti Terrace | | Wanganui | Family | | |
| Brian | Wilson | 7 Kapiti Terrace | | Wanganui | Family | | |
| Leanne | Wills | 70 Hipango Tce | | Wanganui | Cas Sailor | leannewills2015@gmail.com | 345 3330 |
| Dean | Wills | | | | Associate | | |
| Gregor | Vallely | 26 Pickwick Road | | Wanganui | Associate | vallely_family@xtra.co.nz | 345 8890 |